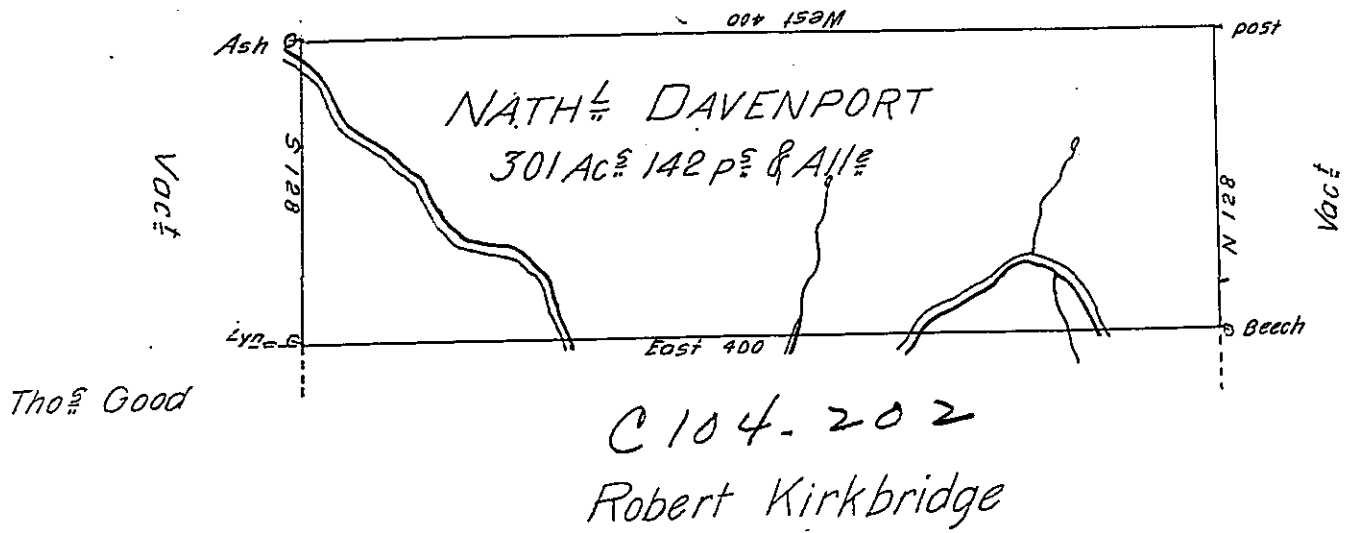


¹⁰⁰¹
C 127-154



By Virtue of an Order of the Surveyor General made on a Certificate of the Secretary of the Land Office dated the 2^d of February 1784 Conformably to a Resolution of the General Assembly on the 30th of January 1784 Surveyed the 22^d of September 1792 Unto Nathaniel Davenport the above described Tract of Three hundred and one Acres and 142 perches of land and usual Allowance Situated on a branch of Bowersmans Creek called Beaver Creek about four miles West of the three Islands in Luzerne County

To Daniel Brodhead Esq^r
Surv^r Gen^l of Pennsylv^a

By W^m Montgomery D.S.

IN TESTIMONY that the above is a copy of the original remaining on file in the Department of Internal Affairs of Pennsylvania, made conformably to an Act of Assembly approved the 16th day of February, 1833, I have hereunto set my Hand and caused the Seal of said Department to be affixed at Harrisburg, this twenty seventh day of July 1904

Geo. P. Brown
Secretary of Internal Affairs.